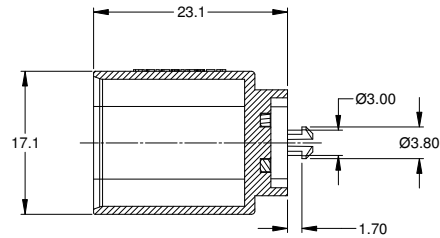
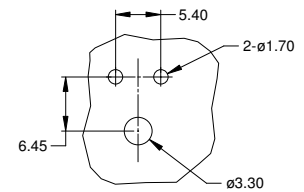
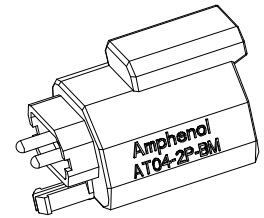
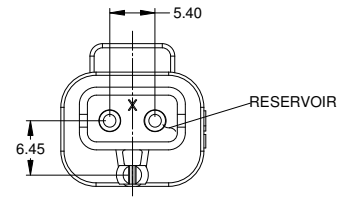
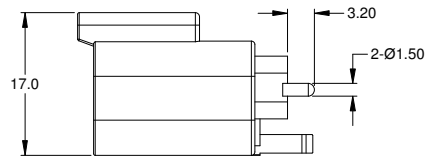
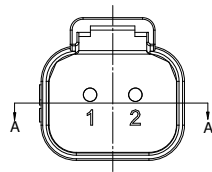


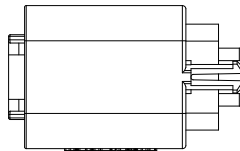
REVISIONS					
REV	ECO	DESCRIPTION	DATE	BY	APPR
A1	-	RELEASE NUMBER	SEP/24/14	ORION	
A2	-	UPDATE DRAWING	OCT/06/14	JARRY	
A3	-	ADD NICKEL PLATING VERSION	APR/24/15	ORION	
A4	-	CHANGE PC TAIL LENGTH	AUG/04/15	ORION	TOMMY
A5	-	REMOVE A DIMENSION AND ADD COLOR	AUG/10/15	ORION	TOMMY



SECTION A-A



RECOMMENDED LAYOUT
VIEW FROM COMPONENTS
SIDE OF PCB



AT04-2P-BMXX VARIANTS

CONTACT PLATING	POTTING OR NOT IN RESERVOIR	PART NUMBER
GOLD	NO POTTING	AT04-2P-BM01
GOLD	POTTING	AT04-2P-BM02
NICKEL	NO POTTING	AT04-2P-BM03
NICKEL	POTTING	AT04-2P-BM04

NOTES: UNLESS OTHERWISE SPECIFIED

- MATERIAL:
HOUSING: THERMOPLASTIC; COLOR: BLACK
CONTACT: COPPER ALLOY
- MODIFICATIONS: PCB MOUNT
- SPECIFICATIONS:
 - CURRENT RATING: 13 AMPS
 - OPERATING TEMPERATURE: -55°C TO +125°C
 - DIELECTRIC WITHSTANDING VOLTAGE: LESS THAN 2 MILLIAMPS CURRENT LEAKAGE @ 1500 VOLTS AC.
 - INSULATION RESISTANCE: 1000 MEGOHMS MIN @ 25°C.
 - MOISTURE RESISTANCE: IP67 (MATED CONDITION)
 - MATING CYCLE DURABILITY: 100 CYCLES
 - RoHS COMPLIANT
- MATING PART: AT06-2S* PLUG
(* = MODIFICATIONS AND COLORS)
- ALL DIMENSIONS ARE FOR REFERENCE USE ONLY.

SEE PART NUMBER		DESCRIPTION		ITEM
PART NUMBER				
QUANTITY		MATERIALS LIST		
UNLESS OTHERWISE SPECIFIED		SIGNATURES		DATE
1) All dimensions are in metric(mm).		DRAWN: ORION LI		SEP/24/14
2) Tolerances are as follows:		CHECKED:		
1 PL DEC ±0.30		FRACTIONS ±1/64		
2 PL DEC ±0.15		ANGLES ±1°		
3 PL DEC ±0.08		ENGINEER:		
3) Note reference =		APPROVAL: TOMMY XIE		SEP/24/14
MATERIAL SPECIFICATIONS:		CUSTOMER:		
PROCESS SPECIFICATIONS:		THIS DRAWING IS SUPPLIED FOR INFORMATION ONLY. DESIGN FEATURES, SPECIFICATIONS AND PERFORMANCE DATA SHOWN HEREON ARE THE PROPERTY OF THE AMPHENOL CORPORATION. NO RIGHTS OF REPRODUCTION ARE IMPLIED. ALL DIMENSIONS ARE SUBJECT TO NORMAL MANUFACTURING VARIATIONS.		
NEXT ASSY:		SIZE: B C-		DWG NO: AT04-2P-BMXX
		SCALE: NONE		REVISION: A5
		SHEET 1 OF 1		

TITLE: RECEPTACLE, 2 PIN, PCB BOARD MOUNT
DWG NO: AT04-2P-BMXX
REV: A5
SH: 1
OF: 1