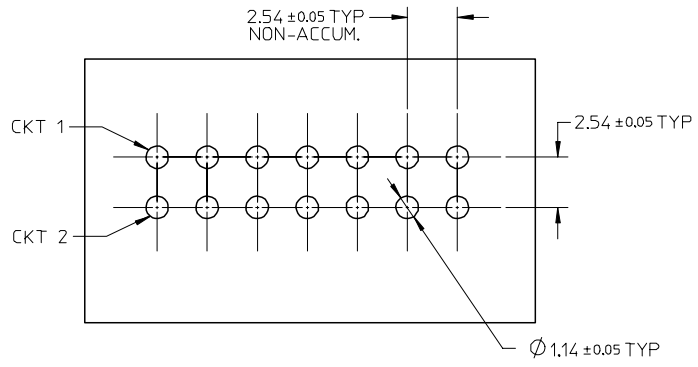
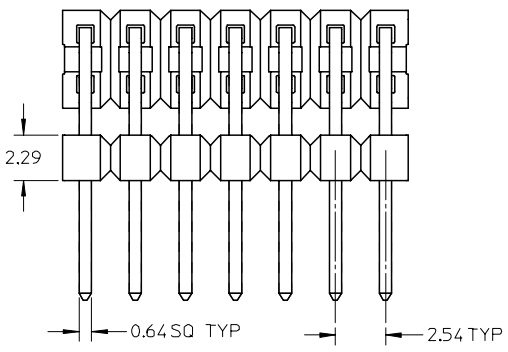


10 9 8 7 6 5 4 3 2 1

F

F

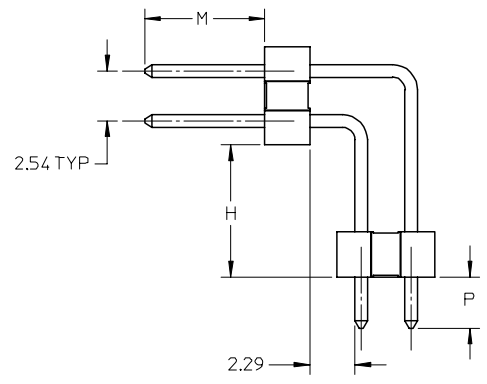
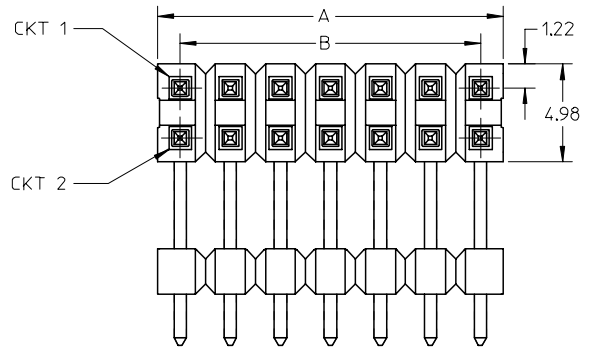


- NOTE:
1. MATERIAL: GLASS FILLED LCP, COLOR: BLACK
TERMINAL: COPPER ALLOY
 2. PIN PUSHOUT FORCE: 1KG MIN. IN EITHER DIRECTION.
 3. PLATING FINISH:
(1) 100MICRONS MIN TIN OVER.
50MICRONS MIN NICKEL UNDERPLATED.
 4. HEADER MAY BE BROKEN TO DESIRED CKT SIZE.
SLIGHTLY FLASHES SHOULD BE ACCEPTED.
 5. THE ABOVE 14 CKT SHOWN IS FOR ILLUSTRATION ONLY.
 6. PARTS TO BE PACKED IN TUBE

RECOMMENDED P.C.B. HOLE LAYOUT

E

E



D

D

C

C

B

B

A

A


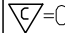
EC NO: S2006-0098 DRWN:KCHO 2005/07/22 CHKD:CGOH 2005/07/22 APPR:PTL IM 2005/07/25	QUALITY SYMBOLS ▽=0 ◻=0	GENERAL TOLERANCES (UNLESS SPECIFIED)		DIMENSION STYLE	SCALE	DESIGN UNITS	THIRD ANGLE PROJECTION			
				MM ONLY	NTS	METRIC				
				mm	INCH	DRAWN BY		TITLE		
						YLQ1A0	SALES DRAWING			
A1	DESCRIPTION REV	4 PLACES ± --- ± ---		DATE		2.54MM PITCH, HEADER				
		3 PLACES ± --- ± ---		PTL IM		DUAL ROW DUAL WAFER R/A				
		2 PLACES ± 0.25 ± ---		DATE		MOLEX INCORPORATED				
		1 PLACE ± --- ± ---		SCLOW		2004/11/18		DOCUMENT NO.		SHEET NO.
		ANGULAR ± 3 °		SEE TABLE		SD-87952-006		1 OF 2		
		DRAFT WHERE APPLICABLE MUST REMAIN WITHIN DIMENSIONS		SIZE A3		THIS DRAWING CONTAINS INFORMATION THAT IS PROPRIETARY TO MOLEX INCORPORATED AND SHOULD NOT BE USED WITHOUT WRITTEN PERMISSION				

9 8 7 6 5 4 3 2 1

PART NO.	CKT SIZE	VOID POSITION	PLATING TYPE	DIMENSION				
				A	B	M	H	P
87952-0002	2	-----	1	2.42/ 2.54	-	6.10	6.70	2.60
87952-0004	4	-----	1	4.83	2.54	6.10	6.70	2.60
87952-0001	6	-----	1	7.37	5.08	6.10	6.70	2.60
87952-0003	6	4	1	7.37	5.08	6.10	6.70	3.46
87952-0008	8	-----	1	9.91	7.62	6.10	6.70	2.60
87952-0010	10	-----	1	12.45	10.16	6.10	6.70	2.60
87952-0012	12	-----	1	14.99	12.70	6.10	6.70	2.60
87952-0014	14	-----	1	17.53	15.24	6.10	6.70	2.60
87952-0016	16	-----	1	20.07	17.78	6.10	6.70	2.60
87952-0018	18	-----	1	22.61	20.32	6.10	6.70	2.60
87952-0020	20	-----	1	25.15	22.86	6.10	6.70	2.60
87952-0022	22	-----	1	27.69	25.40	6.10	6.70	2.60
87952-0024	24	-----	1	30.23	27.94	6.10	6.70	2.60
87952-0026	26	-----	1	32.77	30.48	6.10	6.70	2.60
87952-0028	28	-----	1	35.31	33.02	6.10	6.70	2.60
87952-0030	30	-----	1	37.85	35.56	6.10	6.70	2.60
87952-0032	32	-----	1	40.39	38.10	6.10	6.70	2.60
87952-0034	34	-----	1	42.93	40.64	6.10	6.70	2.60
87952-0036	36	-----	1	45.47	43.18	6.10	6.70	2.60
87952-0038	38	-----	1	48.01	45.72	6.10	6.70	2.60
87952-0040	40	-----	1	50.55	48.26	6.10	6.70	2.60

PART NO.	CKT SIZE	VOID POSITION	PLATING TYPE	DIMENSION				
				A	B	M	H	P
87952-0042	42	-----	1	53.09	50.80	6.10	6.70	2.60
87952-0044	44	-----	1	55.63	53.34	6.10	6.70	2.60
87952-0046	46	-----	1	58.17	55.88	6.10	6.70	2.60
87952-0048	48	-----	1	60.71	58.42	6.10	6.70	2.60
87952-0050	50	-----	1	63.25	60.96	6.10	6.70	2.60
87952-0052	52	-----	1	65.79	63.50	6.10	6.70	2.60
87952-0054	54	-----	1	68.33	66.04	6.10	6.70	2.60
87952-0056	56	-----	1	70.87	68.58	6.10	6.70	2.60
87952-0058	58	-----	1	73.41	71.12	6.10	6.70	2.60
87952-0060	60	-----	1	75.95	73.66	6.10	6.70	2.60
87952-0062	62	-----	1	78.49	76.20	6.10	6.70	2.60
87952-0064	64	-----	1	81.03	78.74	6.10	6.70	2.60
87952-0066	66	-----	1	83.57	81.28	6.10	6.70	2.60
87952-0068	68	-----	1	86.11	83.82	6.10	6.70	2.60
87952-0070	70	-----	1	88.65	86.36	6.10	6.70	2.60
87952-0072	72	-----	1	91.19	88.90	6.10	6.70	2.60
87952-0074	74	-----	1	93.73	91.44	6.10	6.70	2.60
87952-0076	76	-----	1	96.27	93.98	6.10	6.70	2.60
87952-0078	78	-----	1	98.81	96.52	6.10	6.70	2.60
87952-0080	80	-----	1	101.35	99.06	6.10	6.70	2.60

EC NO: S2006-0098
 2005/07/22
 DRWN:KCHO
 CHKD:CGOH
 APPR:PTLIM
 2005/07/25

QUALITY SYMBOLS
 =0
 =0

GENERAL TOLERANCES (UNLESS SPECIFIED)

	mm	INCH
4 PLACES	± ---	± ---
3 PLACES	± ---	± ---
2 PLACES	± 0.25	± ---
1 PLACE	± ---	± ---

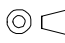
ANGULAR ± 3 °

DRAFT WHERE APPLICABLE
 MUST REMAIN WITHIN DIMENSIONS


DIMENSION STYLE
MM ONLY

DRAWN BY YLQ1A0 DATE 2004/10/26
 CHECKED BY PTLIM DATE 2004/11/17
 APPROVED BY SCLW DATE 2004/11/18

MATERIAL NO. SEE TABLE
 SIZE A3

SCALE NTS
 DESIGN UNITS METRIC
 THIRD ANGLE PROJECTION

TITLE
SALES DRAWING
 2.54MM PITCH, HEADER
 DUAL ROW DUAL WAFER R/A

 MOLEX INCORPORATED

DOCUMENT NO. SD-87952-006
 SHEET NO. 2 OF 2

THIS DRAWING CONTAINS INFORMATION THAT IS PROPRIETARY TO MOLEX INCORPORATED AND SHOULD NOT BE USED WITHOUT WRITTEN PERMISSION