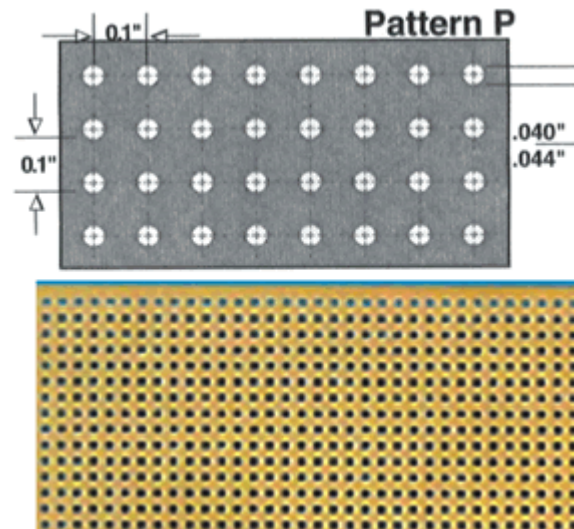




## Vectorbord® Part Number : 84P44

4.5" W x 8.5" L ... 0.042" Hole Dia. ....CEM-1 Epoxy Glass Composite ... Unclad Punchbord

<b>Dimension</b>	: 4.5" W x 8.5" L ( 114.3 mm x 215.9 mm )
<b>Hole Dia.</b>	: 0.042" ( 1.1mm )
<b>Grid &amp; Pattern</b>	: 0.100" x 0.100" and Pattern " P "
<b>Board Thickness</b>	: 0.062" ( 1.57mm )
<b>Material</b>	: CEM-1 Epoxy Glass Composite
<b>NEMA Grade</b>	: CEM-1
<b>UL Flammability Class</b>	: 94V-0
<b>Mil - STD</b>	: - - -



email us your requirements : [inquire@vectorelect.com](mailto:inquire@vectorelect.com)

11115 Vanowen St., North Hollywood, CA 91605, USA

Tel.: ( 818 ) 985 8208, ( 800 ) 423 5659; Fax : ( 818 ) 985 7708

Circbord®, Vectorbord® and VectorPak® are registered trademarks of Vector Electronics & Technology, Inc.  
CompactPCI® is a registered trademark of PCIMG. © 2001 Vector Electronics & Technology, Inc. - All Rights Reserved