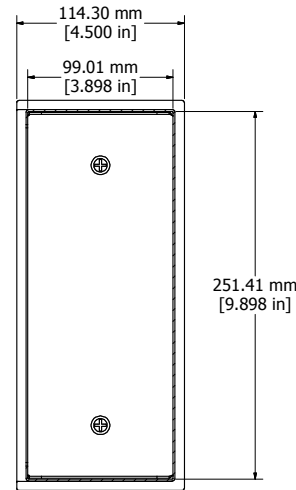
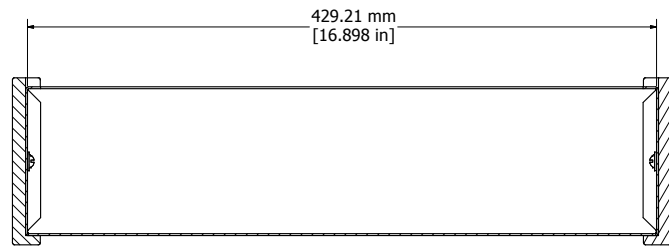
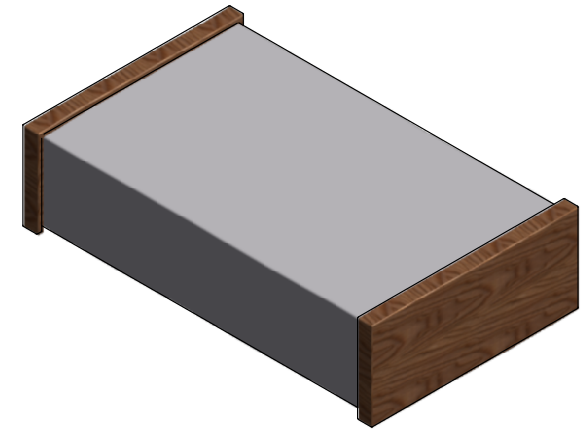


Assembly - View From Bottom



SECTION A-A



SECTION B-B

Purchased Assembly Includes Walnut Sides, Steel Or Aluminum Chassis, Rubber Feet, 4 Lock Washers And 4 Assembly Screws.

Screws Should Not Be Torqued Pass 4.43 lbf.in ( 50 cN.m)

**PART NUMBERS**

**1444-33CWW**

| Component | Description                      | Part Number  |
|-----------|----------------------------------|--------------|
| Chassis   | Aluminum Chassis 7X5X2           | COM56812-6   |
| Insert    | Hardwood Insert                  | HWINSERT     |
| Screw     | 8-32 X 5/16 Truss Head           | SC1440       |
| Washer    | #8 Ext. Tooth Lock Washer        | WA201        |
| Sides     | 1441-12 Walnut Side              | PFR1441-33HW |
| Feet      | Hardwood Chassis Rubber Feet Set | SC1440-D     |

Contact Factory [mjm@hammondmfg.com](mailto:mjm@hammondmfg.com) for quotes  
 Enclosures can be Factory Modified ( Milling, Drilling, Printing etc. )  
 Solid models of this enclosure available in STEP or IGES.



**HAMMOND  
MANUFACTURING INC.**

**1444-33CWW**

[www.hammondmfg.com](http://www.hammondmfg.com)