

SHELL
MATERIAL: ALUMINUM ALLOY
PER ASTM-B-85
FINISH: CHROMATE COATED PER
MIL-C-5541, CLAS 1A

DATE CODE AND PART
NUMBER INK STAMPED

DUST COVER
INSTALLED FOR SHIPMENT
MAT'L: CONDUCTIVE
THERMOPLASTIC

INSULATOR, SOCKET
MAT'L: PPS PER
MIL-M-24519

INSERT RETENTION PLATE (4 REQ'D)
MAT'L: ALUMINUM ALLOY
FINISH: CHROMATE (ALODINE 1200)
PER MIL-C-5541 CLASS 1A

RETAINER
MAT'L: ALUMINUM ALLOY
FINISH: CHROMATE COATED

#4-40 UNC PAN
HEAD SCREWS (10 PLC)

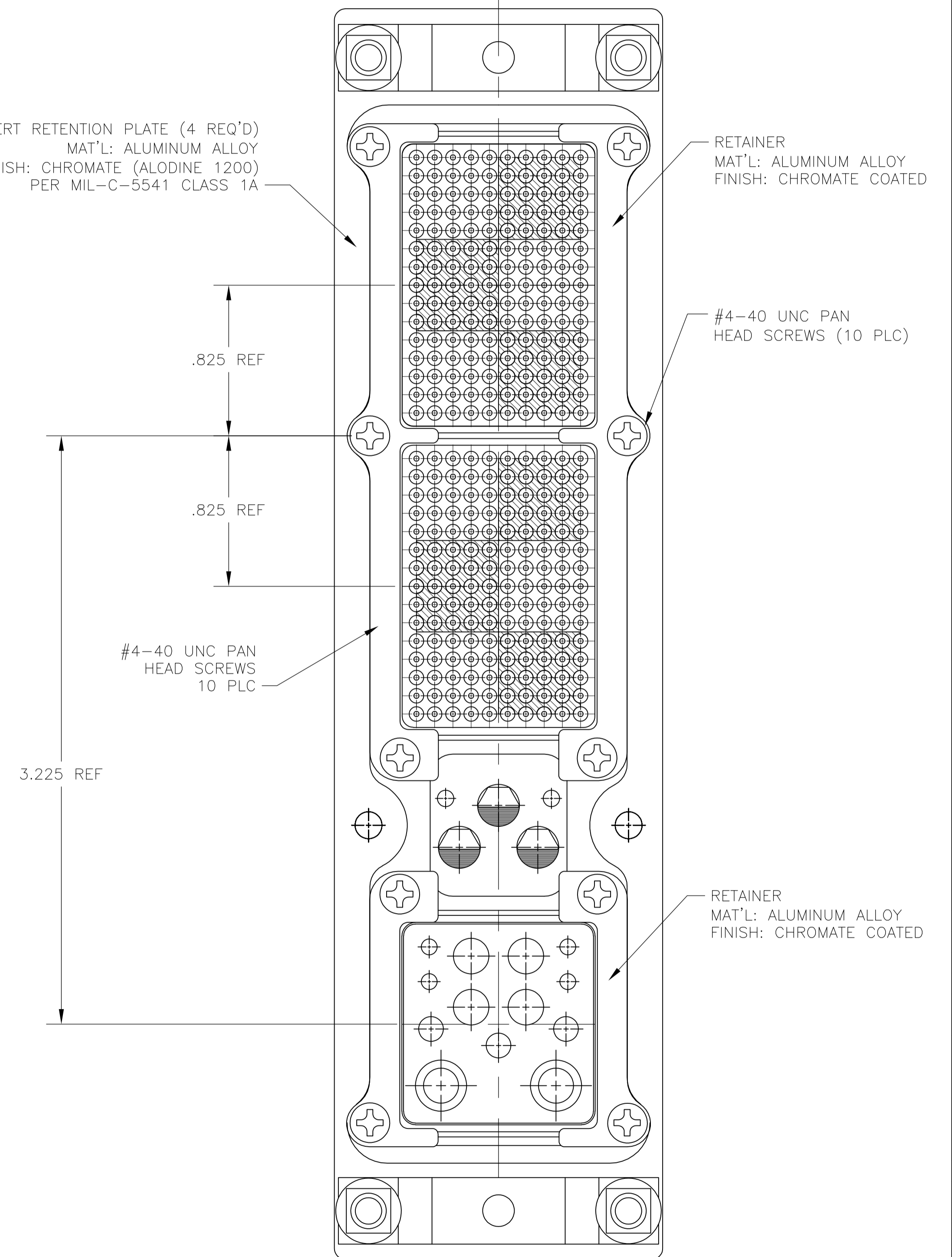
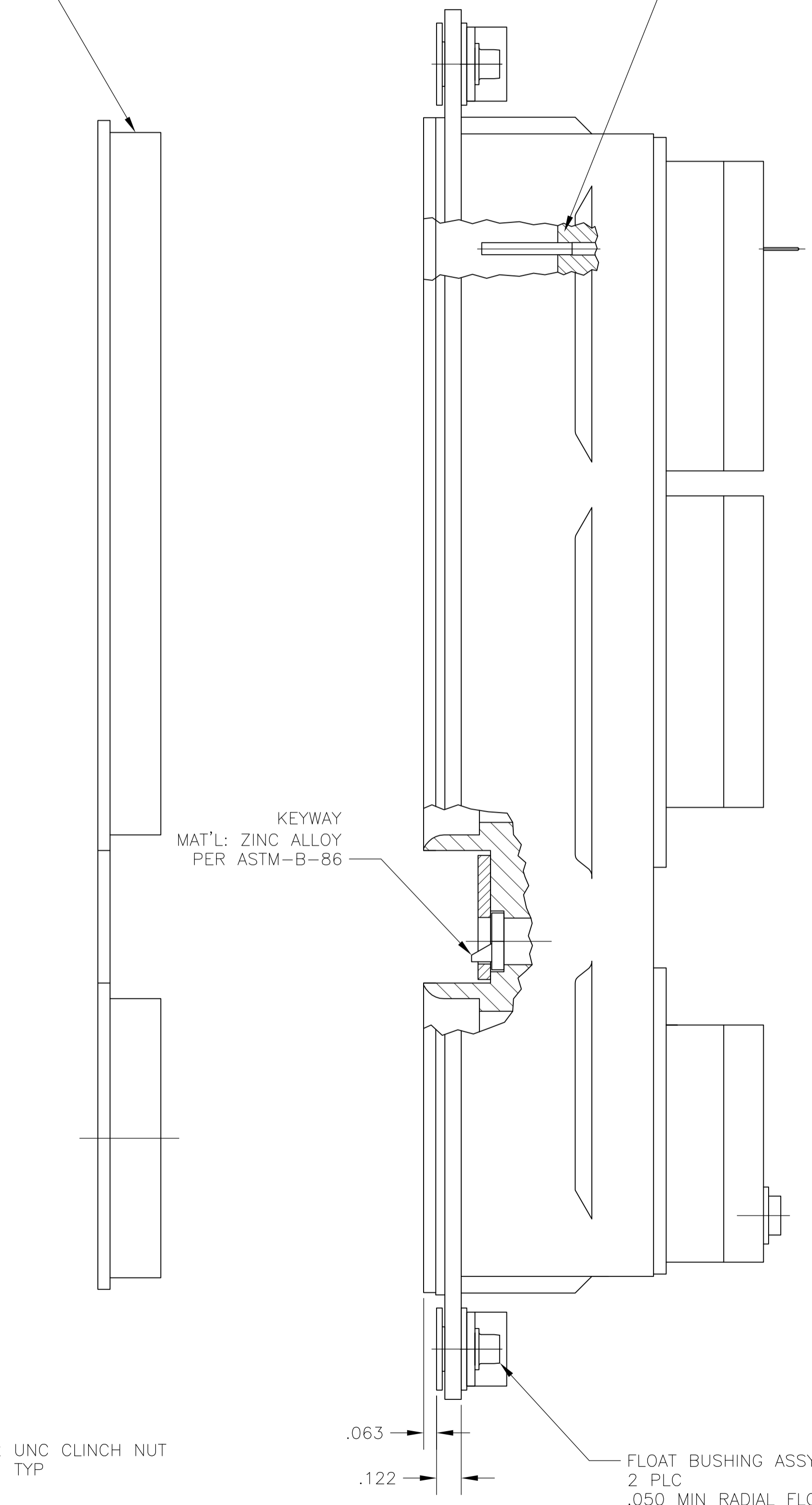
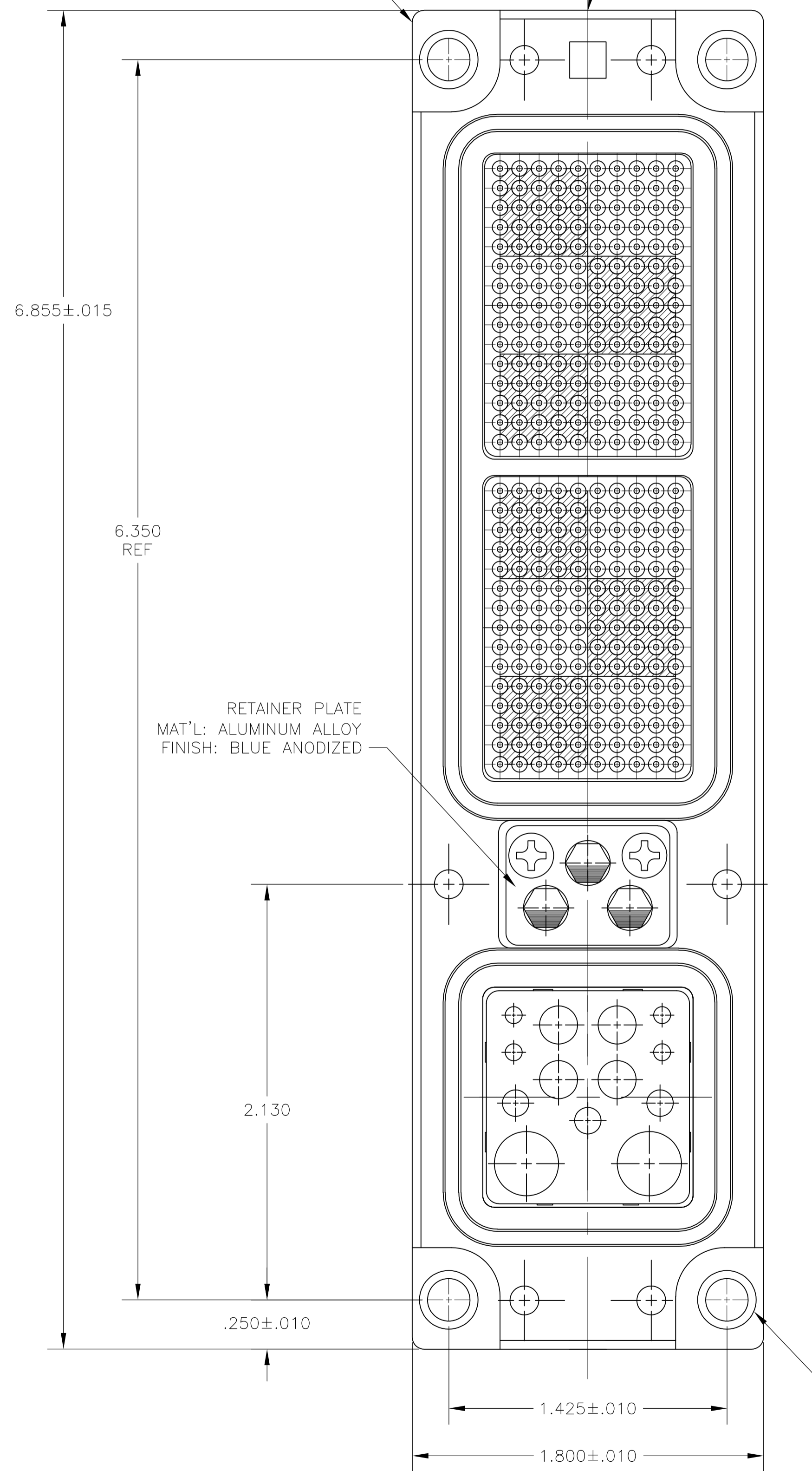
RETAINER
MAT'L: ALUMINUM ALLOY
FINISH: CHROMATE COATED

KEYWAY
MAT'L: ZINC ALLOY
PER ASTM-B-86

#4-40 UNC PAN
HEAD SCREWS
10 PLC

FLOAT BUSHING ASSY
2 PLC
.050 MIN RADIAL FLOAT

#6-32 UNC CLINCH NUT
TYP



THIS DRAWING IS A CONTROLLED DOCUMENT.

DIMENSIONS:	TOLERANCES UNLESS OTHERWISE SPECIFIED:
INCHES	
0 PLC	± .005
1 PLC	± .005
2 PLC	± .005
3 PLC	± .005
4 PLC	± .005
ANGLES	± .005

APPROVED:	DATE:	BY:	DATE:
C. THOMAS	17FEB06	V. FURLER	17FEB06
PRODUCT SPEC			
APPLICATION SPEC			
WEIGHT			
CUSTOMER DRAWING			



CONNECTOR ASSEMBLY, ARINC 600, RECEPTACLE, SIZE 2, (UNSEALED)

SIZE: A1 CAGE CODE: 00779 DRAWING NO: 211700 RESTRICTED TO: 1 OF 1 REV D