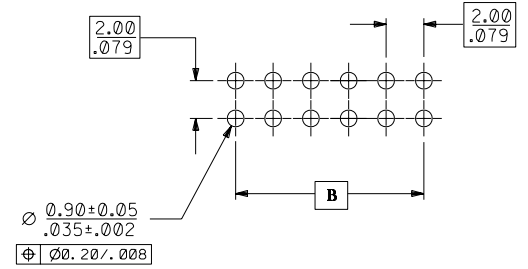


**NOTES:**

- 1) PLATING:  
0.38um/15u" MIN GOLD IN BOTH CONTACT AREA  
BOTH OVER NICKEL OVERALL.
  - 2) MATERIAL:  
HSG : HIGH TEMP THERMOPLASTIC,  
COLOR BLACK  
PIN : 0.50mm SQ. COPPER ALLOY.
  - 3) 12 CKT USED FOR ILLUSTRATION ONLY.
  - 4) PACKED IN POCKET TRAY.
  - 5) PIN PUSHOUT FORCE : 1 KG MIN IN EITHER DIRECTION.
- △ 6) CKT 4 & 6 IS CUT FROM CKT 8 AND 12 RESPECTIVELY,  
ROUGH EDGES ARE EXPECTED ALONG THE CUTTING EDGES.

PART NO.	CKT SIZE	DIMENSION			
		A		B	
		MM	INCH	MM	INCH
87761-0006	04	3.90	.154	2.00	.079
87761-0007	06	5.90	.232	4.00	.157
87761-0008	12	11.90	.468	10.00	.394

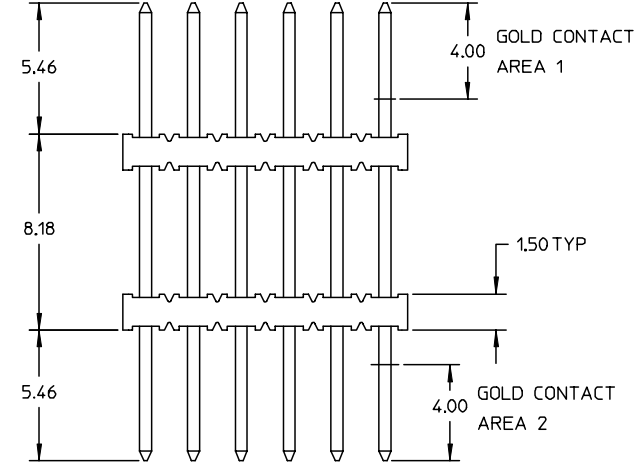
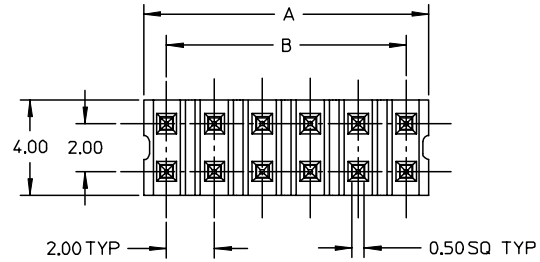


**RECOMMENDED PCB PATTERN**  
(SCALE 5:1)

REL PER PDR*S-000272-00-00 EC NO. S2003-0276 DRWN: KSEE 021219 CHK: KCLING 030102 APPR: PTLIM 030102	QUALITY SYMBOLS MAJOR ▼ = 0 CRITICAL ▽ = 0	GENERAL TOLERANCES: (UNLESS SPECIFIED)		SCALE NTS	DESIGN UNITS <input checked="" type="checkbox"/> mm <input type="checkbox"/> INCH	THIRD ANGLE PROJECTION	DIMENSIONS: <input checked="" type="checkbox"/> mm <input type="checkbox"/> INCH <input type="checkbox"/> mm ONLY	SHT	REV	
		4 PLACES ±0. - ±. -	3 PLACES ±0. - ±.010	2 PLACES ±0.20 ±. -	1 PLACE ±0. - ±. -	DRAWN BY & DATE KSEE 021219		TITLE: 2MM DUAL ROW, DUAL WAFER, 4,6 & 12 CKT, VERTICAL THROUGH HOLE HDR.		
		ANGULAR: ± 3 °				CHECKED BY & DATE KCLING 030102		APPROVED BY & DATE PTLIM 030102		
		CAD FILENAME		MATERIAL NO. SEE TABLE		DRAWING NO. SD-87761-007		SHEET NO. 1 OF 1		
A	REV	THIS DRAWING CONTAINS INFORMATION THAT IS PROPRIETARY TO MOLEX INCORPORATED AND SHOULD NOT BE USED WITHOUT WRITTEN PERMISSION.							SIZE A3	

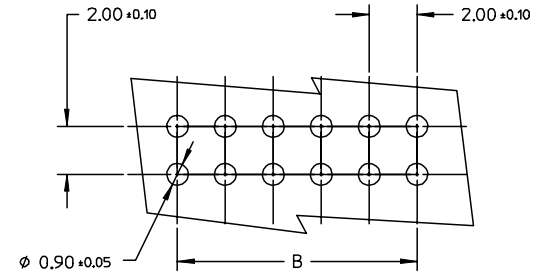
87761

PART NUMBER	CKT SIZE	DIM.A	DIM.B
87761-0006 $\triangle_6$	4	3.90	2.00
87761-0007 $\triangle_6$	6	5.90	4.00
87761-0008	12	11.90	10.00



NOTES:

- MATERIAL:  
HOUSING: HIGH TEMP THERMOPLASTIC, COLOR: BLACK  
PIN: 0.50mm SQ. COPPER ALLOY
- PLATING: 0.384μm/154n MIN GOLD IN BOTH CONTACT AREA  
BOTH OVER NICKEL OVERALL
- 12 CKT USED FOR ILLUSTRATION ONLY
- PACKED IN POCKET TRAY
- PIN PUSHOUT FORCE: 1KG MIN IN EITHER DIRECTION
- $\triangle_6$  CKT 4 AND 6 IS CUT FROM CKT 8 AND 12 RESPECTIVELY.  
ROUGH EDGES ARE EXPECTED ALONG THE CUTTING EDGES.
- PRODUCT SPECIFICATION: PS-87761-100



RECOMMENDED PCB PATTERN

EC NO: S2004-0112 DRWN: RSHAN 2003/09/24 CHKD: KCLING 2003/09/24 APPR: SKTOH 2003/10/07	QUALITY SYMBOLS $\blacktriangledown = 0$ $\triangle = 0$	GENERAL TOLERANCES (UNLESS SPECIFIED)		SCALE NTS	DESIGN UNITS METRIC	THIRD ANGLE PROJECTION	REVISE ON CAD ONLY
			mm	INCH	DIMENSION STYLE MM ONLY		TITLE 2MM DUAL ROW, DUAL WAFER VERTICAL THROUGH HOLE HEADER, 4, 6 & 12 CKT
		4 PLACES	± ---	± ---	DRAWN BY RSHAN	DATE 2003/09/05	
		3 PLACES	± ---	± ---	CHECKED BY KCLING	DATE 2003/09/19	
			2 PLACES	± 0.20	± ---		
			1 PLACE	± ---	± ---		
			ANGULAR ± 1 °		APPROVED BY SKTOH		DATE 2003/09/22
			DRAFT WHERE APPLICABLE		MATERIAL NO. SEE TABLE		DOCUMENT NO. SD-87761-018
			MUST REMAIN WITHIN DIMENSIONS		THIS DRAWING CONTAINS INFORMATION THAT IS PROPRIETARY TO MOLEX INCORPORATED AND SHOULD NOT BE USED WITHOUT WRITTEN PERMISSION		SHEET NO. 1 OF 1