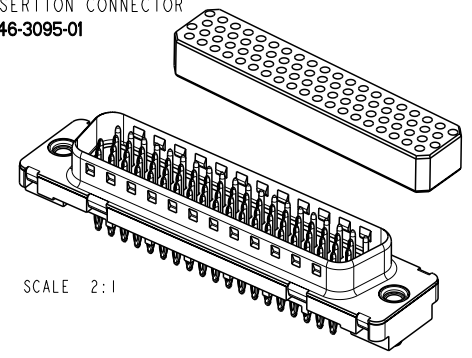


INTERMEDIATE PUSH BLOCK  
FOR INSERTION CONNECTOR  
P/N: 8646-3095-01



SCALE 2:1

**REQUIREMENTS**

**Technical characteristics:**

Shell: steel tin plated  
Insulators: self-extinguishing thermoplastic, UL class 94V0  
Contacts: phosphor bronze, gold over 2 microns mini nickel on active area and flash to 1.5 micron maxi SnPb over 1 micron mini nickel on termination  
Cycles: 500min

**Press fit connectors:**

Insertion force 100 N max per contact  
Extraction force 30 N mini per in SnPb hole  
20N mini in pure tin hole  
15N mini in copper hole

**Accessories:**

Threaded insert M3 with harpoon: tin plated  
retention against torque 0.7 N.m minimum  
Grounding strip: phosphor bronze, tin plated

**Electrical characteristics:**

Max current rating: 2.5A  
Test voltage: 750V  
Rated voltage: 300V  
Contact resistance: <15 mOhm  
Shell resistance: <5 mOhm  
Insulation resistance >5000 MOhm

**Climatic characteristics:**

Operating temperature range: -55°C + 125°C  
Industrial atmosphere (bellcore test)  
4 gases, 10 days

**Marking:**

Ink marking on front shell  
Logo, reference FCI, code year-week

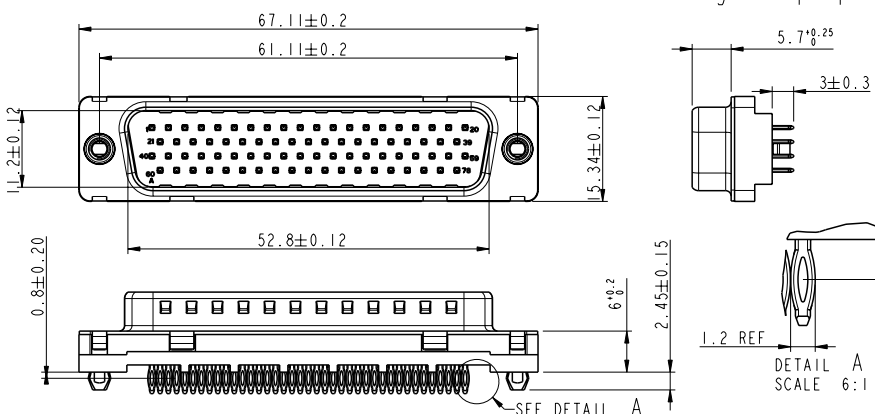
**Packaging**

In tray according to specification EUR-14-015

**Dimensions:**

In accordance with MIL-DTL-24308B

Tous droits réservés. Reproduction ou utilisation sans autorisation est formellement interdite.  
 All rights reserved. Reproduction or use without authorization is expressly prohibited.  
 Property of FCI. Copyright FCI.



TIN LEAD PART NUMBER

PART NUMBER
<b>CD78P9IC6GL00</b>

LEAD FREE PART NUMBER

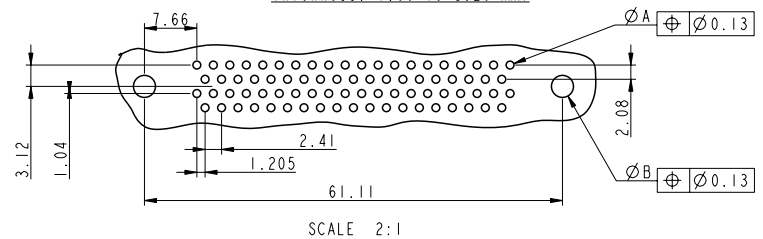
PART NUMBER
<b>CD78P9IC6GL00LF</b>

PLATING FOR TIN VERSIONS, TERMINATIONS LF ONLY

NOTE RoHS INFORMATIONS	
-	The "LF" products meet European union Directives and other country regulations as described in GS-22-008
-	Active Part : Gold over Nickel
-	Termination plating spec: 0.5 to 3 µm Nickel, 0.5 to 1.5 µm Sn
-	Shell plating: 2 to 4 µm Cu + 3 to 10 µm Sn (pure bright)
-	Accessories: Sn pure bright
-	Packaging spec: see GS-14-920

METALLIZED HOLE DIMENSION		HOLE PRESS-FIT CONTACT SnPb	HOLE PRESS-FIT CONTACT Sn	HOLE PRESS-FIT HARPOONS SnPb	HOLE PRESSFIT HARPOON Sn	HOLE PRESS FIT CONTACT Copper OSP	HOLE PRESS-FIT HARPOON Copper OSP
P.C.B. HOLE DEFINITION (NOTE -1 AND -2)	DRILL DIAMETER	∅ 1.15 REF (NOTE -3)	∅ 1.15 REF (NOTE -3)	∅ 3.22 REF (note-3)	∅ 3.22 REF (note 3)	∅ 1.15 REF (note 3)	∅ 3.22 REF (note-3)
	DRILLED HOLE	∅ 1.12 -1.18	∅ 1.12 -1.18	∅ 3.19-3.25	∅ 3.19-3.25	∅ 1.12-1.18	∅ 3.19-3.25
	COPPER PLATING	25µ mini-50µ maxi	25µ mini- 50µ maxi	25µ mini-50µ maxi	25µ mini-50µ maxi	25µ mini-50µ maxi	25µ mini-50µ maxi
	TIN LEAD PLATING	5µ mini - 15µ maxi		5µ mini-15µ maxi			
	PUR TIN PLATED		0.8 mini to 1.2µ maxi		0.8µ mini-1.2µ maxi		
	OSP PLATING(copper)					0.20µ mini-0.5µ maxi	0.20µ mini-0.5µ maxi
	FINISH HOLE(note 4)	∅ 0.94-1.09	∅ 1.00-1.09	∅ 3.02-3.20	∅ 3.08-3.20	∅ 1.01-1.09	∅ 3.09-3.20

PC board drilling dimensions (after plating - thickness: 1.60 to 3.20 mm)



SCALE 2:1

NOTE-1: THESE DIMENSIONS MUST BE RESPECT TO SECURE PRESS-FIT PIN PERFORMANCES.  
 NOTE-2: ACCORDING TO IEC -352-5 SPEC.  
 NOTE-3: MAJOR REQUIREMENT FOR PRESS-FIT PIN PERFORMANCE  
 NOTE-4: DIMENSIONS AFTER REFLOW FOR TIN AND TIN LEAD HOLES

**A**  
FCI

**E**

Tous droits réservés. Reproduction ou utilisation sans autorisation est formellement interdite.  
 All rights reserved. Reproduction or use without authorization is expressly prohibited.  
 Property of FCI. Copyright FCI.

<b>FCI</b> www.fciconnect.com		surface <input checked="" type="checkbox"/>	tolerance <input checked="" type="checkbox"/>	projection <input checked="" type="checkbox"/>	MM
Dr	PESSON 14/11/03	Product family	-	size	A2
Eng	LEGARE 14/11/03	Spec ref	-	Scale	2:1
E	LS4078 MPE 18/08/04	Chr	DUMAZY 14/11/03	Material	SEE NOTES
F	LS4108 LGO 04/11/08	Appr	LEGARE 14/11/03	ECN	LS05-0077
G	LS05-004 LGO 09/03/05	MALE SUB COMPACT D78		deg no	C01-8646-0845
H	LS05-0077 lgo 01/09/05	Straight compliant press fit		Rev.	H
-		catalog no	-	CUSTOMER COPY	sheet 1 of 1