

**TETP-900  
MULTI-FUNCTION CABLE TESTER, TONER AND PROBE**

*User's Guide*



**►INTRODUCTION:**

The TETP-900 is a multifunction cable tester and probe kit. The kit consists of the TET-700 multifunction cable tester and toner, The TEP-200 tone tracing probe and the TET-6 accessory pack along with two 9V batteries.

The TET-700 multifunction cable tester is used to test continuity on RJ45 cables, BNC & F connectorized coaxial cables and other non connectorized cables; it also provides tone via the RJ45 and BNC connectors as well as the test clips. Lastly the TET-700 provides Talk power to a telephone for testing.

The TEP-200 tone tracing probe has a plastic probe tip to prevent accidental shorts. The probe is used to detect a tone which is emitted from the internal speaker. The louder the tone the closer you are to the tone source. The TEP-200 probe also includes a signal strength LED for visual indication of signal strength. The brighter the LED the stronger the signal, indicating the closer proximity to the signal source.

The TEP-200 tone trace probe can also check polarity of many 6P2C/4P2C telephone jacks. Using a RJ11 jumper (not supplied) connect to telephone jack and then connect to RJ12 jack at bottom of TEP-200. The TEP-200 will indicate if the polarity is correct or reversed by lighting the NOR light for correct polarity and REV light for reverse polarity.

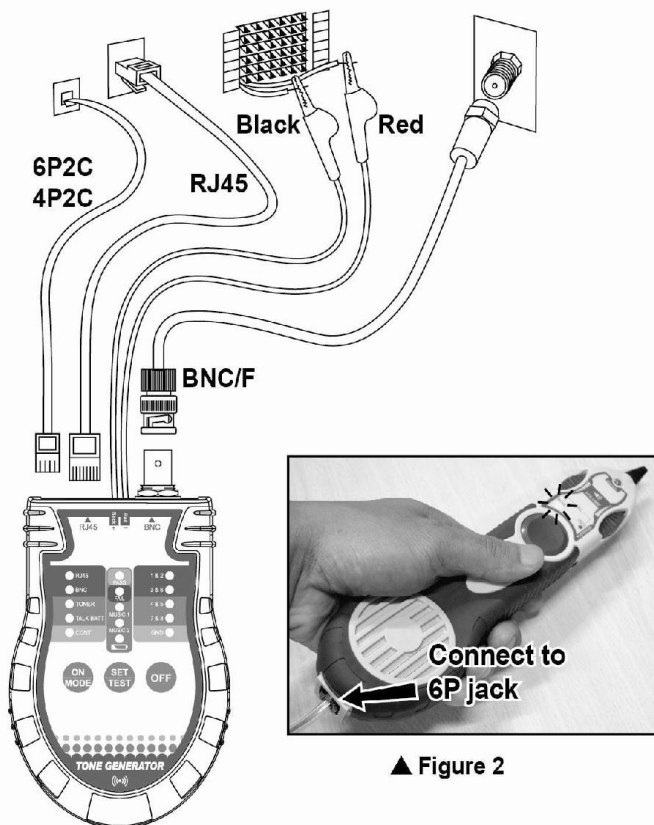
**►OPERATION:**

**• The TET-700 is simple and easy to use:**

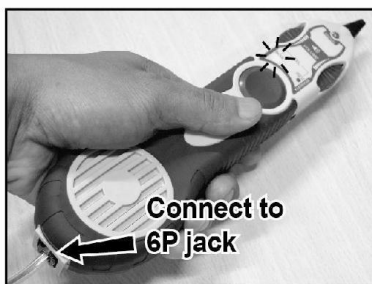
1. Press the on/mode button to turn the unit on. Press the mode button repeatedly to select the function you need.
2. Press the set/test button to test. When in toner mode, press the set/test button to select the tone setting, either music1 or music2.
3. Press the off button to turn the unit off. Note the TET-700 has an auto off feature when in RJ45, BNC, TALK BATT, CONT modes. For Toner mode you must press the OFF button to turn the toner off.

**•RJ45 Cable Tester Mode:**

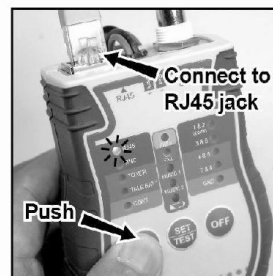
1. Press the on/mode button to turn the unit on. Press the mode button repeatedly until the yellow LED next to RJ45 lights.
2. Connect the RJ45 cable to unit. Remove remote terminator from body of unit and connect to the other end of the cable and push Set/Test button to test cable. If the cable is open the LED whose pair or pairs are open will not light, and the fail LED will light. For shorted pairs, the wire pairs that are shorted will be indicated by flashing LED's and the Fail LED will light. A good cable is shown by all wire pair LED's being on and the Pass LED on as well.
3. Unit will power off automatically after 20 seconds if no other button is pressed after pressing Set/Test button.



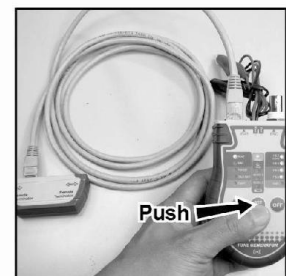
**Main set  
▲ Figure 1**



**▲ Figure 2**



**▲ Figure 3**

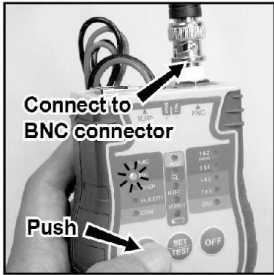


**▲ Figure 4**

**⚠ DO NOT USE ON LIVE CIRCUITS!**

**●BNC/F Coaxial Cable Tester Mode:**

1. Press the on/mode button to turn the unit on. Press the mode button repeatedly until the yellow LED next to BNC lights.
2. Connect one end of the cable being tested to the BNC port on the TET-700 tester. If your connector is fitted with an F type connector use the BNC to F adapter. The other end of the cable must be fitted with the 50 ohm BNC terminator. If needed use the other BNC to F adapter provided. Push the Set/Test button if the 50 ohm terminator is detected the Pass LED will light as will the 1&2 LED. If the cable fails the Fail LED will light and the 1&2 LED will blink.
3. Unit will power off automatically after 20 seconds if no other button is pressed.



▲ Figure 5

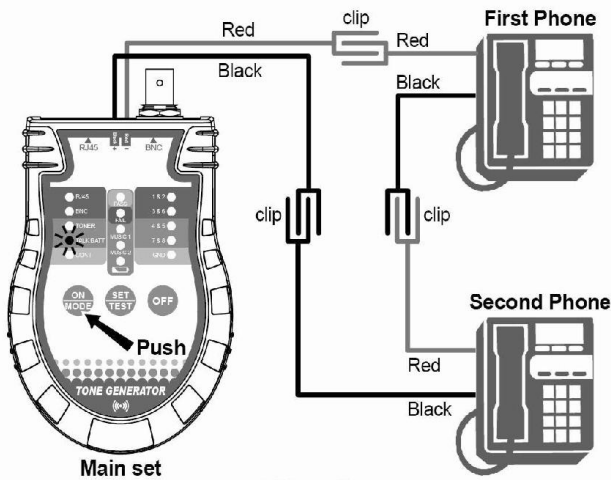


▲ Figure 6

**⚠ DO NOT USE ON LIVE CIRCUITS!**

**●Talk Batt Mode:**

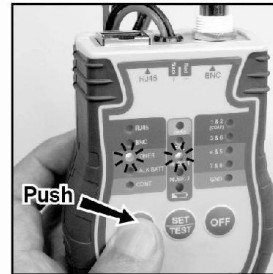
1. Press the on/mode button to turn the unit on. Press the mode button repeatedly until the yellow LED next to Talk/batt lights.
2. Using the Red and Black clips connect the TET-700 to the telephones per Figure 9 below. Using this mode will drain the battery quickly and should only be used for short intervals.



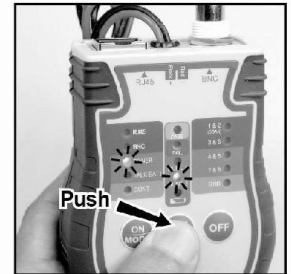
▲ Figure 9

**●Toner Mode:**

1. Press the on/mode button to turn the unit on. Press the mode button repeatedly until the yellow LED next to the Toner lights.
2. Push Set/Test button to select either the Music 1 or Music 2 tone setting.
3. When In Toner mode the tone is transmitted to the RJ45, BNC ports. The red and black test clips allow for tracing of any type of cable.
4. Connect the cable you want to trace to the appropriate port or use the tests clips. Next using the TEP-200 tone tracing probe press the large button on the unit to start tracing a cable. When the tone is detected you will hear the tone emanate from the internal speaker and the signal strength LED will start to illuminate. The louder the tone and the brighter the LED the closer you are to the cable being traced.
5. Use this mode to help you locate cables in walls, ceilings or wire bundles.



▲ Figure 7



▲ Figure 8

**●Cont Mode:**

1. Press the on/mode button to turn the unit on. Press the mode button repeatedly until the yellow LED next to Cont lights.
2. Using the Red and Black clips connect the TET-700 to the cable being tested and push the Set/Test button. If the TET-700 detects continuity in the cable the Pass LED will light and the 7&8 LED will light. If the TET-700 detects an open the Fail LED will light and the 7&8 LED will blink.

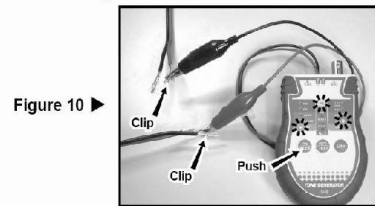
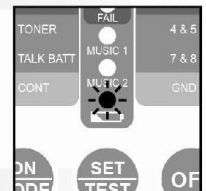


Figure 10 ▶

**●Low Battery Indication:**

1. If power in the battery is low the music 2 / low batt indicator LED blinks indicating the battery needs to be replace.



**●Specifications:**

- TETP-900 Consists of
1. TET-700 Multifunction cable tester and toner
  2. TEP-200 Tone tracing probe
  3. TET-6 accessory kit
    - a. (2) BNC to F connector adapters
    - b. (1) 50 ohm BNC terminator
    - c. (1) Belt Clip
    - d.(1) BNC cable jumper
    - e. (1) F connector Jumper
    - f. (1) RJ45 cable jumper
  4. (2) 9V batteries