



EDS4100



EDS4100 Quick Start Guide



EDS4100

EDS4100

QUICK START GUIDE CONTENTS

What's In the Box	2
Pinouts	2
Quick Connect	3
IP Addressing	4
Quick Setup Using DeviceInstaller GUI	5-9
Configuration Using Web Manager	10-11
LEDs	12
Contact	13

The EDS products allow serial devices to connect and communicate over an Ethernet network. This Quick Start will step you through hardware installation and configuration of your EDS4100.

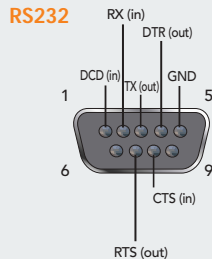
WHAT'S IN THE BOX

In addition to the EDS, the box contains the following items:

PART #	COMPONENT DESCRIPTION
520-080-R	Power cube, 100-240VAC, with international adapters (depending on model)
500-164	DB9F-DB9F Null Modem Cable
CD-ED-01	CD-ROM containing the User Guide, software utilities, tutorial and Quick Start Guide.

PINOUTS

The EDS also supports RS485/422. For more pinout information, see the User Guide on the CD or on the Lantronix Web site at www.lantronix.com

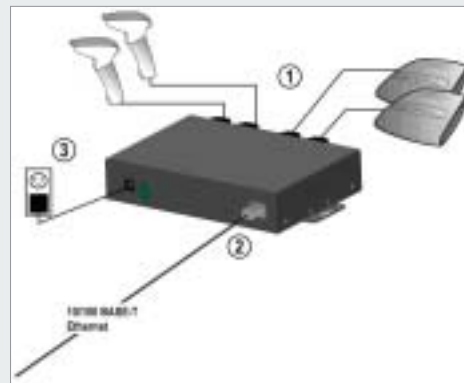


QUICK CONNECT

Complete the following steps in order. Refer to the numbers in the figure below.

1. Connect a serial device to your unit.
2. Connect an Ethernet cable to the RJ45 port.
3. If not using Power over Ethernet (PoE), supply power to your unit using the power supply that was included in the packaging.
4. Supply power to the serial device.

Note: The required input voltage is 9-30 VDC (center +) for the barrel connector or 42-56 VDC for the screw terminal connector (4W maximum power required).



IP ADDRESSING

Your unit must have a unique IP address on your network. The IP address can be assigned automatically, or you can assign it manually.

DHCP

Many networks use an automatic method of assigning an IP address called DHCP. If you are unsure whether your network uses DHCP, check with your systems administrator.

The EDS looks for a DHCP server when it first powers up. You can use the DeviceInstaller graphical user interface to search the network for the IP your unit has been assigned by the DHCP server. If the EDS does not acquire an IP, or you do not use DHCP, you must assign a fixed IP address using the serial port of the EDS.

FIXED IP ADDRESS

In most installations, a fixed IP address is desirable. The systems administrator generally provides the IP address.

The IP address must be within a valid range, unique to your network, and in the same subnet as your PC. You will need the following information before you set up the unit as described in this Quick Start Guide.

IP Address: _____
Subnet Mask: _____
Gateway: _____

The following section describes assigning an IP address using DeviceInstaller.

Note: For detailed instructions on assigning the IP address using the serial port, please see the User Guide or the EDS Video Tutorial on the CD or the Lantronix web site.

QUICK SETUP USING DEVICEINSTALLER GUI

Step 1: Install DeviceInstaller

To use the DeviceInstaller utility, first install it from the product CD.

1. Insert the product CD into your CD-ROM drive.
2. If the CD does not launch automatically:
 - a) Click the **Start** button on the Task Bar and select **Run**.
 - b) Enter your CD drive letter, colon, backslash, **Launch.exe** (e.g., **D:\Launch.exe**).
3. Click the **DeviceInstaller** button.
4. Respond to the installation wizard prompts.
(When prompted to select an installation type, select **Typical**.)


Note: For more information about DeviceInstaller, see the DeviceInstaller online Help.


Step 2: Configure Network Settings

To assign an IP address manually:

1. Click **Start** → **Programs** → **Lantronix** → **DeviceInstaller** → **DeviceInstaller**.
If your PC has more than one network adapter, a message displays. Select an adapter and click **OK**.

USING DEVICEINSTALLER GUI CONTINUED...

Note: If the unit already has an IP address (e.g., DHCP has assigned an IP address), click the **Search**  icon and select the unit from the list of Lantronix device servers on the local network.

2. Click the **Assign IP** icon .
3. If prompted, enter the hardware address (on the product label) and click **Next**.

Device Identification

Enter the hardware address of the device. This is typically printed on the back panel of the device in the form "12-34-56-78-9A-BC".

00-20-4a-41-13-D9

4. Select **Assign a specific IP** address and click **Next**.
5. Enter the **IP address**. The **Subnet mask** displays automatically based on the IP address; if desired, you may change it. On a local network, you can leave the **Default gateway** blank (all zeros). Click **Next**.

USING DEVICEINSTALLER GUI CONTINUED...

IP Settings


Please fill in the IP address, subnet, and gateway to assign the device. The subnet will be filled in automatically as you type, but please verify it for accuracy. Incorrect values in any of the below fields can make it impossible for your device to communicate, and can cause network disruption.

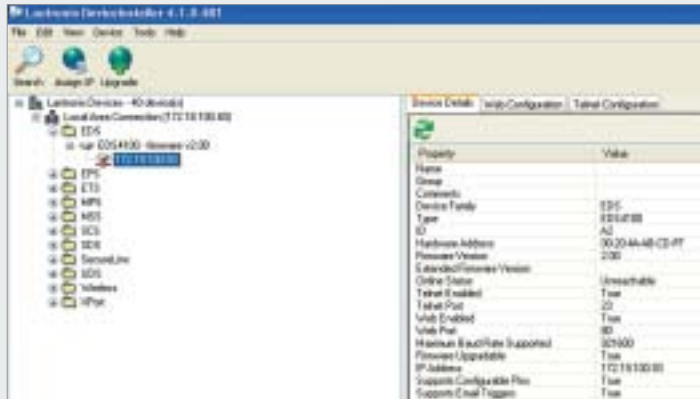
IP address:	<input type="text" value="172.18.27.125"/>
Subnet mask:	<input type="text" value="255.255.0.0"/>
Default gateway:	<input type="text" value="172.19.0.11"/>

6. Click the **Assign** button and wait several seconds until a confirmation message displays. Click **Finish**.
7. Click the **Close** button to close the dialog box and return to the main window.

USING DEVICEINSTALLER GUI CONTINUED...

Step 3: Add the Unit to the Device List

Now add the unit to the list of similar Lantronix devices on the network so that you can manage and configure it. To perform this step, click the **Search** icon . DeviceInstaller locates the unit and adds it to the list. To view the current configuration, double-click the unit in the list.



USING DEVICEINSTALLER GUI CONTINUED

Step 4: Complete the Configuration

Once the unit is in the device list, you can complete the configuration:

- To use a web interface (Web Manager), double-click the unit in the list and click the **Web Configuration** tab. See *Configuration Using Web Manager* below.
- To use Setup Mode (a command line interface), double-click the unit in the list and click the **Telnet Configuration** tab.

Note: Please see the User Guide for detailed instructions on configuration.

CONFIGURATION USING WEB MANAGER

In this Quick Start Guide, we briefly describe how to configure the EDS using Web Manager, Lantronix's browser-based configuration tool. For detailed information on Web Manager configuration and on other methods, please see the EDS4100 User Guide.

1. Do one of the following:
 - Using DeviceInstaller, select the unit, select the **Web Configuration** tab, and click **Go**.
 - Open a web browser and enter the IP address of the EDS to open Web Manager.

The EDS Web Manager window displays.

CONFIGURATION CONTINUED

The screenshot shows the Lantronix EDS Web Manager interface. The top header includes the Lantronix logo and 'EDS Powered by Excalibur OS'. A navigation menu on the left lists various configuration options. The main content area is titled 'Device Status' and contains the following information:

Product Information		
Product Type:	Lantronix EDS4100	
Firmware Version:	2.0.8.170	
Serial Number:		
System:	0 Base 001632	
Permanent Config:	Save	
Network Settings		
Firewall:	Auto (000type Full)	
MAC Address:	00:20:4c:00:00:00	
IPv4:		
IP Address:	172.16.100.201 / 255.255.0.0 (DHCP)	
Default Gateway:	172.16.0.1 (DHCP)	
Domain:		
Primary DNS:	172.16.253.2 (DHCP)	
Secondary DNS:	10.204.140.201	
Line Settings		
Line 1:	80231 25000 N 8, 1, None	
Line 2:	80231 9000 H 8, 1, None	
Line 3:	80231 9000 H 8, 1, None	
Line 4:	80231 9000 H 8, 1, None	
Forwarding		
Tunneling	Connect Mode	Accept Mode
Tunnel 0:	Disabled	Waiting
Tunnel 1:	Disabled	Waiting
Tunnel 2:	Disabled	Waiting
Tunnel 3:	Disabled	Waiting

2. Use the menu to navigate to sub pages where you can configure the EDS.

LEDS

The unit contains the following LEDs:

- Power
- TX/RX for each serial port
- 10/100 Mb Link
- 10/100 Activity
- Diagnostic

SERIAL LEDS

MEANING

10/100 Mb Link steady amber	100 Mb network connection
10/100 Mb Link off	10 Mb network connection
10/100 Activity blinking	Network packets transmitting and receiving
TX Blinking	Serial port is sending data
RX Blinking	Serial port is receiving data
Diagnostic Blinking	OS startup
Diagnostic On	Startup complete

CONTACT

For questions and technical support, please check our online knowledge base at www.lantronix.com/support

Lantronix
15353 Barranca Parkway, Irvine, CA 92618, USA
Phone:(949) 453-3990 or Fax: (949) 453-3995
www.lantronix.com