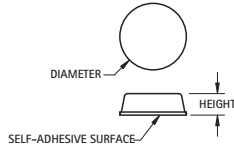


ADHESIVE BUMPERS

Applies quickly and easily. Prevents nicks, scratches, scuffs, vibration, slippage and noise. Easy peel and stick mounting. Crack resistant. High coefficient of friction. Sold in sheets.

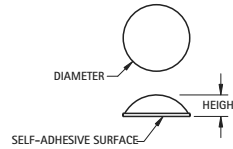
FLAT



MATERIAL: Molded Polyurethane

| BLACK CAT. NO. | CLEAR CAT. NO. | DIAMETER | HEIGHT | PARTS/SHEET |
|----------------|----------------|-------------|------------|-------------|
| 780-B | 780-C | .375 (9.5) | .125 (3.2) | 300 |
| 781-B | 781-C | .500 (12.7) | .060 (1.5) | 200 |
| 782-B | 782-C | .500 (12.7) | .140 (3.6) | 200 |

DOMED



MATERIAL: Molded Polyurethane

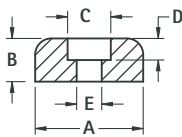
| BLACK CAT. NO. | CLEAR CAT. NO. | DIAMETER | HEIGHT | PARTS/SHEET |
|----------------|----------------|-------------|------------|-------------|
| 783-B | 783-C | .250 (6.4) | .062 (1.6) | 578 |
| 784-B | 784-C | .335 (8.5) | .085 (2.2) | 450 |
| 785-B | 785-C | .440 (11.2) | .200 (5.1) | 242 |

RECESSED BUMPERS

Provides excellent traction and shock absorbing qualities. available with or without Mold-in Washers.



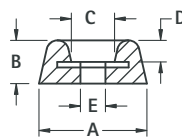
FIG. 1



MATERIAL: Rubber, BUNA S (Figs. 1 & 2), EPDM



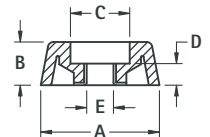
FIG. 2 Mold-In Washer



MATERIAL: Rubber, BUNA S (Figs. 1 & 2), EPDM



FIG. 3 Mold-In Washer



MATERIAL: EPDM Rubber

| CAT. NO. | FIG. | A | B | C | D | E | SCREW SIZE |
|----------|------|--------------|-------------|-------------|------------|------------|------------|
| 720 | 1 | .500 (12.7) | .250 (6.4) | .250 (6.4) | .187 (4.7) | .125 (3.2) | # 4 |
| 721 | 1 | .625 (15.9) | .312 (7.9) | .250 (6.4) | .187 (4.7) | .125 (3.2) | # 4 |
| 722 | 1 | .718 (18.2) | .437 (11.1) | .250 (6.4) | .218 (5.5) | .125 (3.2) | # 4 |
| 723 | 2 | .937 (23.8) | .375 (9.5) | .375 (9.5) | .218 (5.5) | .187 (4.7) | # 8 |
| 724* | 3 | .687 (17.4) | .250 (6.4) | .343 (8.7) | .125 (3.2) | .155 (3.9) | # 6 |
| 725* | 3 | .875 (22.2) | .312 (7.9) | .406 (10.3) | .187 (4.7) | .187 (4.7) | # 8 |
| 726* | 3 | 1.062 (27.0) | .437 (11.1) | .468 (11.9) | .234 (5.9) | .200 (5.1) | # 10 |
| 727 | 3 | .562 (14.3) | .375 (9.5) | .218 (5.5) | .187 (4.7) | .115 (2.9) | # 4 |
| 728 | 3 | .750 (19.1) | .437 (11.1) | .265 (6.7) | .250 (6.4) | .148 (3.8) | # 6 |
| 729 | 3 | .937 (23.8) | .625 (15.9) | .359 (9.1) | .328 (8.3) | .174 (4.4) | # 8 |

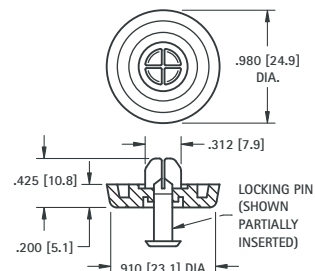
*Grey - all others Black

SELF-LOCKING BUMPER FOOT



- A unique easy-to-install self-locking bumper foot
- Two piece assembly, furnished pre-assembled
- Vibration absorbing and skid resistant
- Mounts without screws or tools

Recommended Mounting Hole: .305 (7.8) diameter



MATERIAL:

Foot: Santoprene, Black **Pin:** Polypropylene, Black

CAT. NO. 717